

For Sale

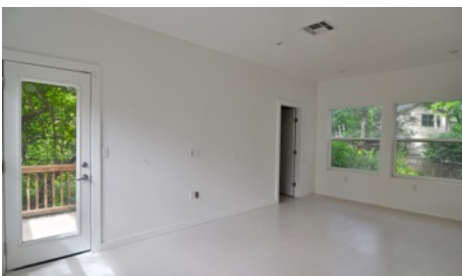
4214 Wilshire Parkway

4214 Wilshire Pkwy - 78722
3149 SF [TCAD] • 3 bed / 3 bath
MLS #: 1980511

Skout^x

Roland Galang
Broker | CNE, LEED AP
512 791.1584
Roland@SkoutAustin.com

Just
Listed



4214 Wilshire is a spacious home within a quiet tree-lined cul-de-sac, in Wilshire Wood neighborhood. Steps to Patterson Park & blocks to Mueller Central. This unique property has an extensive fenced yard with mature trees and a creek. Cross the small bridge to a stand-alone workshop/studio (unfinished) nestled amongst lush greenery. A convenient urban core location: ~0.7 mile to I-35; ~0.8 miles to Mueller Central; ~1.6 miles to UT Austin; ~3 miles to State Capitol; and ~8 miles to airport. Easy access and close proximity to a growing list of popular dining spots along Airport Blvd.

Quick Facts

- Fully remodeled - foundation & leveling; framing; 2nd floor addition; plumbing & sewer lines; electrical wiring; roof
- Interior Features: Updated kitchen & master bath; wood floors; fire place; upstairs loft
- Energy Features: 2s6 walls w/ foam insulation; double-paned windows; abundant windows w/ natural light
- Unfinished workshop, by creek, in back
- Extensive fenced yard - ideal for entertaining

All information contained herein is deemed reliable but not guaranteed. Buyer must verify.

