

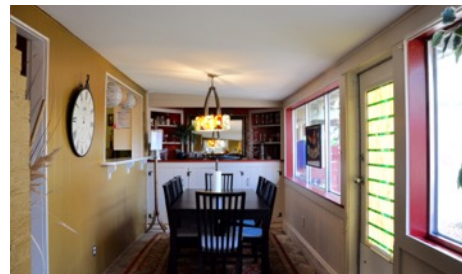
For Sale

4209 Wilshire Parkway

4209 Wilshire Pkwy - 78722
1440 SF [TCAD] • 3 bed / 2 bath
MLS #: 1572710

Skout^x

Roland Galang
Broker | CNE, LEED AP
512 791.1584
Roland@SkoutAustin.com



4209 Wilshire is a charming home nestled within a quiet tree-lined cul-de-sac, at edge of Cherrywood neighborhood. Steps to Patterson Park & blocks to Mueller Central, this unique property is comprised of a main house (2BR+2BA) and a loft space (additional ~250SF, with separate entrance above carport. A convenient urban core location: ~0.7 mile to I-35; ~0.8 miles to Mueller Central; ~1.6 miles to UT Austin; ~3 miles to State Capitol; and ~8 miles to airport. Easy access and close proximity to a growing list of popular dining spots along Airport Blvd.

Quick Facts

- Main House (2BR+2BA) - single story
- Loft (additional ~250SF) - separate entrance above carport
- Enclosed front sunroom - ample windows & natural light
- Stained glass accents - front & dining room doors
- Spacious utility room
- Fenced back patio

All information contained herein is deemed reliable but not guaranteed. Buyer must verify.

