

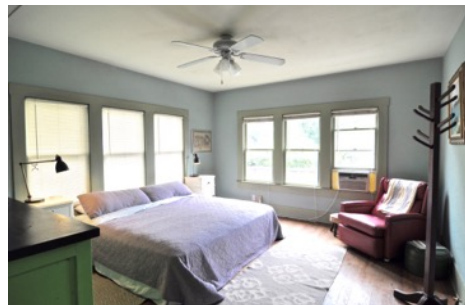
For Sale

1003 E 14th Street

Swede Hill, 78702
994 SF [owner] • 2 bed / 1 bath
MLS #: 3946901

Skout^x

Rob Seidenberg
Senior Agent
512 228.2900
robseidenberg@yahoo.com



1003 E 14th Street is a charming 1930s bungalow, in the coveted tree-filled Swede Hill neighborhood. A mere 20 yards from a serene urban pocket park, it sits amid stunning recent builds and remodels. Huge potential for remodel, add-on or new build. With a convenient urban core location, 1003 E 14th Street is about 1209 Cedar Avenue is ~0.2 mile to I-35; ~0.4 mile to Dell Medical Center; ~1.4 miles to Austin Convention Center; and ~7.4 miles to Austin Bergstrom International Airport.

Quick Facts

- Lot: 4139 SF
- Rare East Side opportunity - prime location
- Light-filled master bedroom
- Separate dining room
- Fenced yard
- Off-street parking
- Huge potential for remodel, add-on or new build - 2 sets of available plans

All information contained herein is deemed reliable but not guaranteed. Buyer must verify.

