

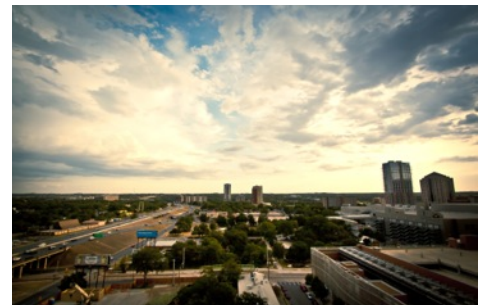
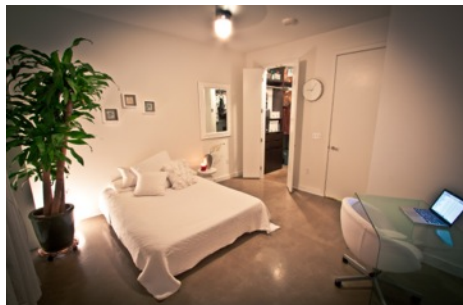
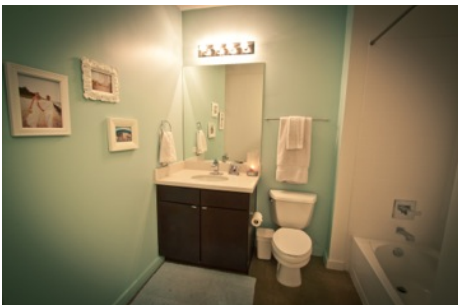
# For Sale

## 507 Sabine Street, #1006

# Skout<sup>x</sup>

Sabine on Fifth - 78701  
877 SF [tax record] • 1 bed / 1 bath  
MLS #: 8780523

Roland Galang  
Broker | CNE, LEED AP  
512 791.1584  
roland@skoutaustin.com



**Sabine on Fifth** is an adaptive reuse condominium project, within the Downtown Entertainment District. Unit 1006 is a spacious Penthouse unit, with ample natural light, facing south over Waller Creek\*. Steps from great dining and entertainment, Sabine offers true urban core living. Nearby faves include: Easy Tiger, Koriente, Parkside, Backspace, Daruma. Convenient location: ~1 mile to Texas State Capitol; ~1.2 miles to UT Austin; ~7 miles to airport. Walkability Score: 97/100 ([www.walkscore.com](http://www.walkscore.com))

*\*Learn more about the Waller Creek Conservancy and its vision for transforming one of the largest urban creek in the nation.*

### Quick Facts

- Penthouse unit
- Open floorplan w/ high ceilings
- Large arched windows w/ expansive views
- Custom walk-in closet system by Honea Woodworks
- 5 in-ceiling speakers
- Polished/sealed concrete floors
- Silestone counters
- Stainless appliances
- Gated access building & parking lot - one reserved space

All information contained herein is deemed reliable but not guaranteed. Buyer must verify.

